

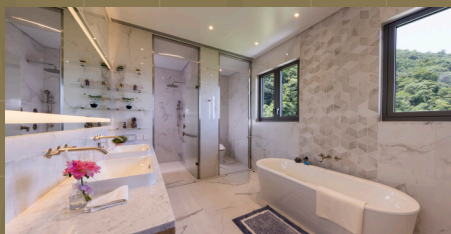
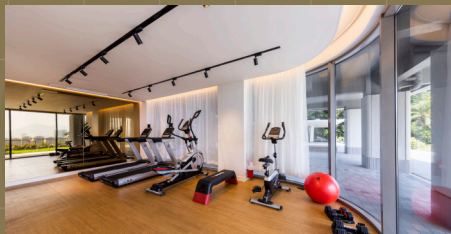


眺馬閣 RACEVIEW MANSION

46 STUBBS ROAD

司徒拔道 46 號



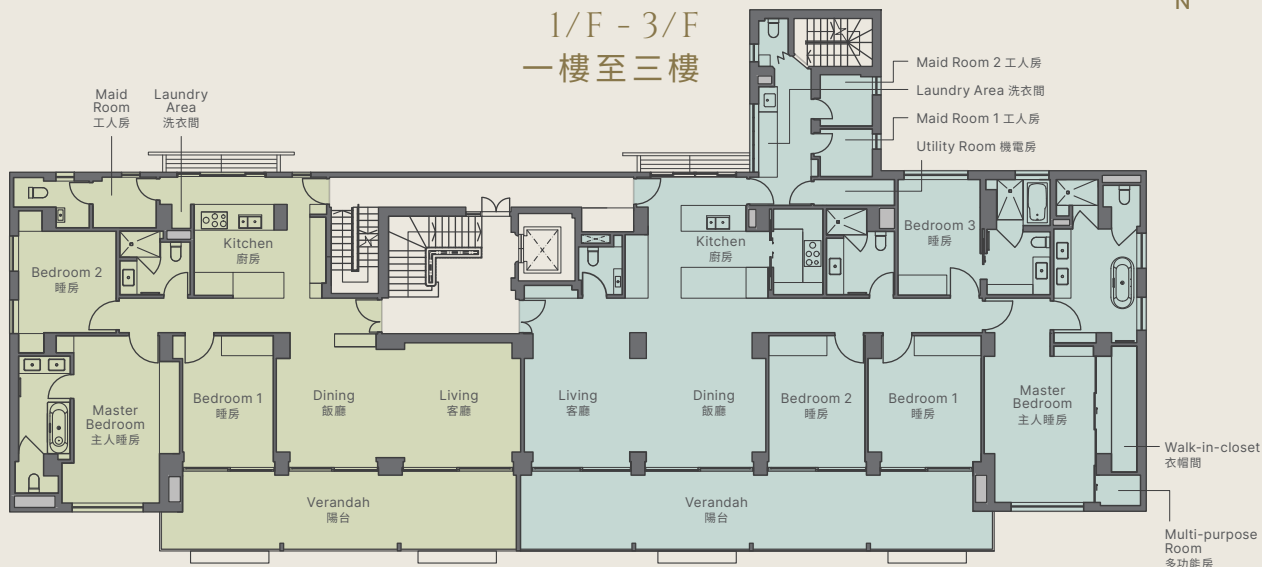


RACEVIEW MANSION FLOOR PLANS

眺馬閣平面圖



1/F - 3/F 一樓至三樓



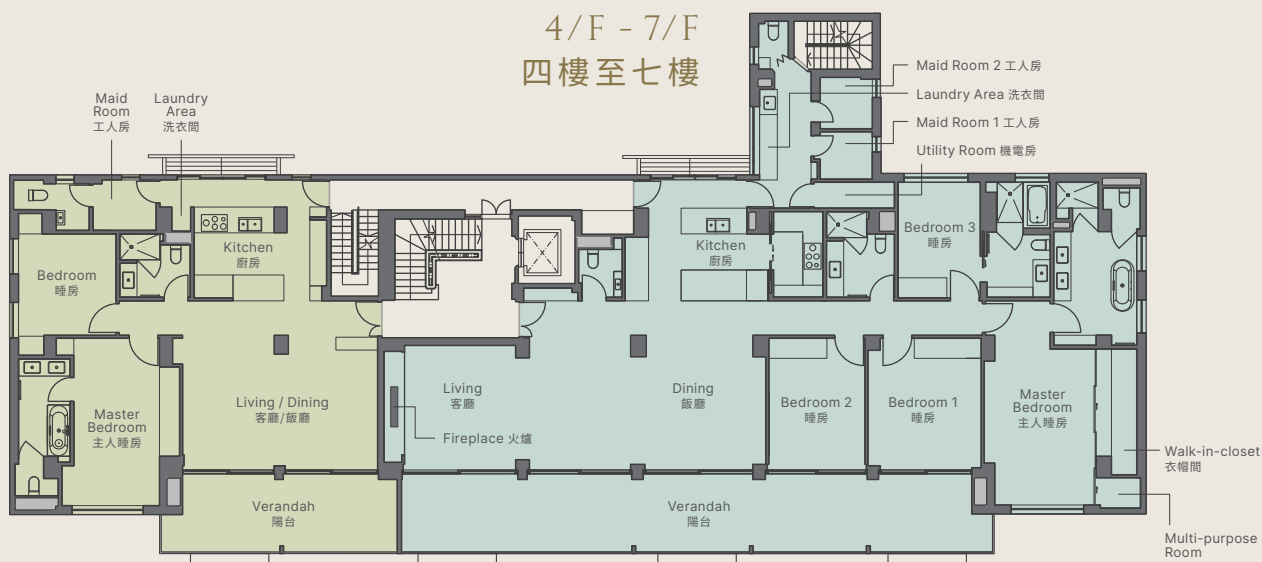
UNIT A 單位

3-BEDROOM | 2,000 SQFT (SALEABLE)
三房 | 2,000 平方呎(實用)

UNIT B 單位

4-BEDROOM | 3,100 SQFT (SALEABLE)
四房 | 3,100 平方呎(實用)

4/F - 7/F 四樓至七樓



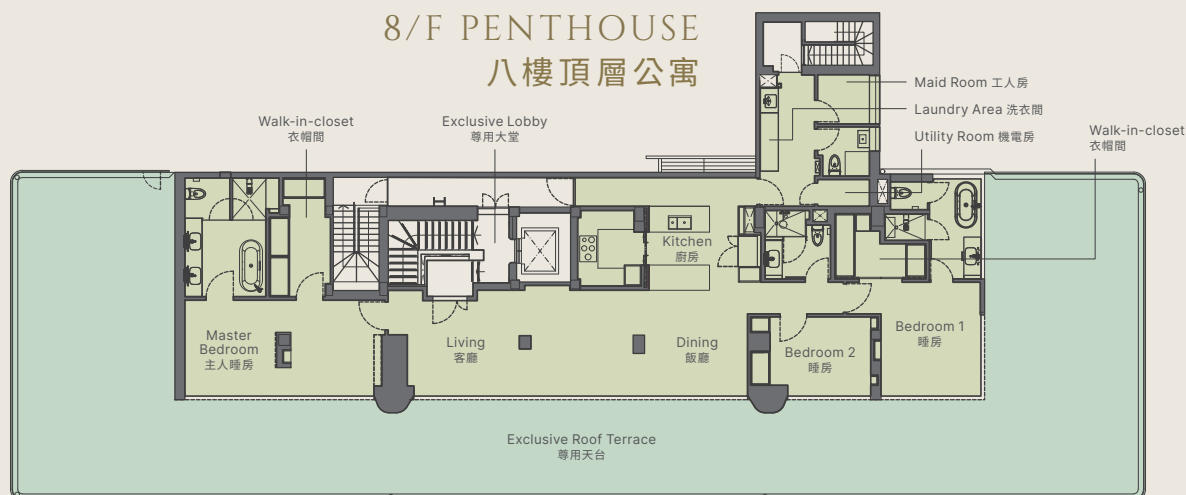
UNIT A 單位

2-BEDROOM | 1,700 SQFT (SALEABLE)
兩房 | 1,700 平方呎(實用)

UNIT B 單位

4-BEDROOM | 3,400 SQFT (SALEABLE)
四房 | 3,400 平方呎(實用)

8/F PENTHOUSE 八樓頂層公寓



3-BEDROOM | 2,300 SQFT (SALEABLE) & 2,400 SQFT EXCLUSIVE ROOF TERRACE
三房 | 2,300 平方呎(實用)及 2,400 平方呎專用天台

Raceview Mansion is one of HK Island's most well established and distinguished apartment buildings, situated in a lush green environment high up on popular Stubbs Road.

Designed and constructed in the mid 50's, the apartments have been sympathetically refurbished to exceptionally high international standards, in keeping with Raceview Mansion's rich history.

The natural ambience and panoramic 180-degree harbour and city views from the up to 60 foot generous verandah serves to refresh and rejuvenate one's senses.

A selection of units of Raceview Mansion is now available for lease. Interested parties are cordially invited by the developer, KHI Management Limited to view by appointment.

眺馬閣建於 50 年代，位處於半山司徒拔道，依巒而建環抱翠綠，是港島區其中一座最具特色的私人公寓。大廈現已完成翻新工程，每個單位設計時尚，並保留原有歷史韻味及寬闊的陽台，可飽覽 180 度維多利亞港迷人景致，讓住客享受舒適寧靜又充滿活力的生活。

部份眺馬閣單位現正放租，發展商廣興置業誠摯邀請有興趣的租戶預約參觀。



KHI Management Limited

廣興置業集團有限公司

📍 28 & 29/F, AXA Southside,
38 Wong Chuk Hang Rd, Hong Kong
香港黃竹坑道 38 號安盛匯 28 及 29 樓

☎ (852) 2820 7198

✉ leasing@khiholdings.com

🌐 www.raceviewmansion.com

Subject to contract and availability 一切以合約為準

Whilst every care has been taken in preparing these particulars, KHI Holdings and the respective landlords give no warranty, express or implied, as to the completeness or accuracy of the information contained herein. These particulars are subject to errors, omissions, change of price/rental or other conditions, withdrawal without notice, and any special listing conditions imposed by our principals. KHI Holdings will not be liable for negligence, or for any direct or indirect consequential losses or damages arising from the use of this information. You should satisfy yourself about the completeness or accuracy of any information or materials and seek professional advice in regard to all the information contained herein. The information contained herein does not form part of an offer or contract. The photographs, images, drawings or sketches shown in this advertisement / promotional material represent an artist's impression of the development concerned only. They are not drawn to scale and/or may have been edited and processed with computerised imaging techniques.

在撰寫以上資料時，雖已作出合理和謹慎的考慮，廣興置業及業主對資料的完整和準確性恕不保證、表出或暗示絕對無誤。資料有可能出現租金、售價或其他條件上的改動，或撤回而不經提前通知，並可能受特別條款約束。因使用此資料而直接或間接引致的損失或損毀，廣興置業恕不負責。客戶應自行查證資料或內容的完整和準確性，並就所載資料諮詢專業意見。所載資料僅供參考，並不構成要約或合約一部份。本廣告／宣傳資料內載列的相片、圖像、繪圖或素描顯示純屬畫家對該發展項目之想像。有關圖片、圖像、繪圖或素描並非按照比例繪畫及／或可能經過電腦修飾處理。